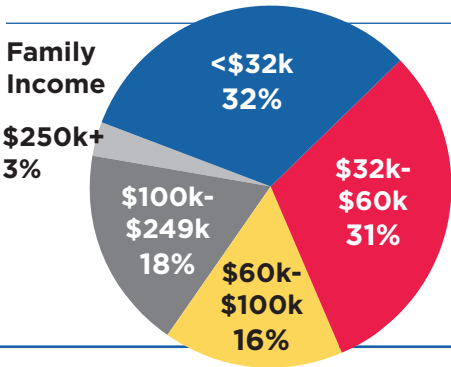


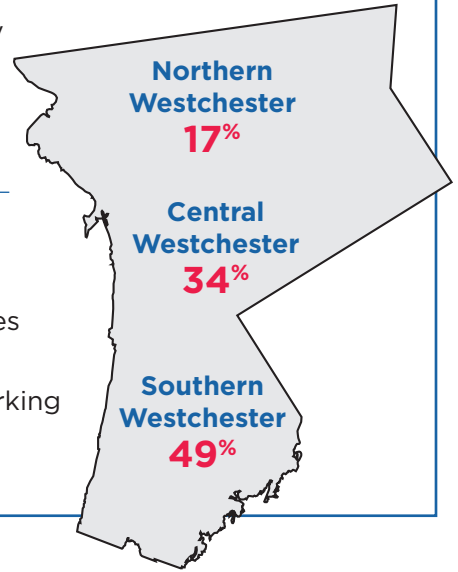
DEMOGRAPHICS

Respondents are working parents, mostly from southern and central Westchester, and represent all income levels. **63% make below \$60K and 21% earn more than \$100k per year.**

715 Families

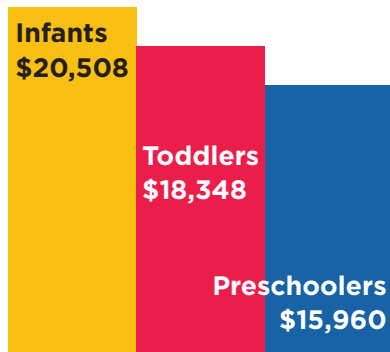


- 52%** Two-parent families
- 48%** Single-parent families
- 94%** At least 1 parent working outside the home



CHILD CARE COSTS AND PAYMENT

Average cost of full-time child care:*



*Statistics from the Child Care Council of Westchester, Inc. Referral Database

Child Care Subsidy Eligible:

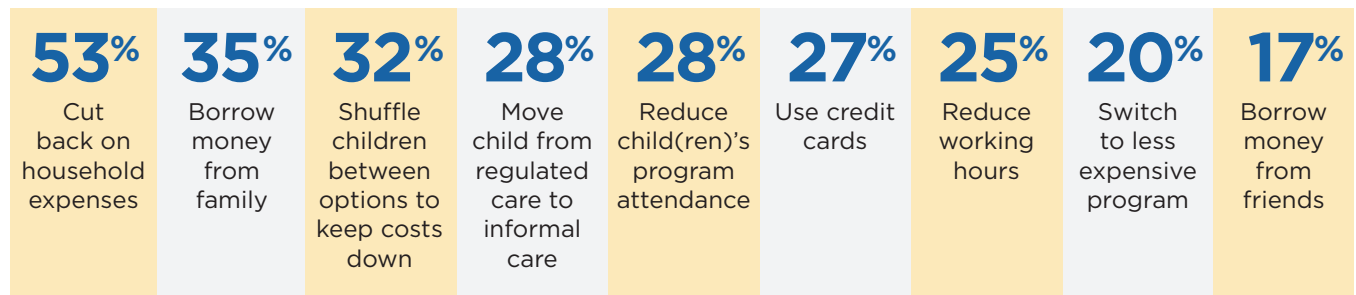
- 37%** of responding families
- 29%** have trouble paying their family share

The Council's Subsidy Specialist helped **707 parents** with the subsidy application from 2015 to October 2017. As is true nationally, many parents are still unaware of the subsidy, unsure whether they qualify, or unable to correctly complete the application without help. **Continuous subsidy assistance is needed.**

If cost was not a factor, parents would take the following steps:



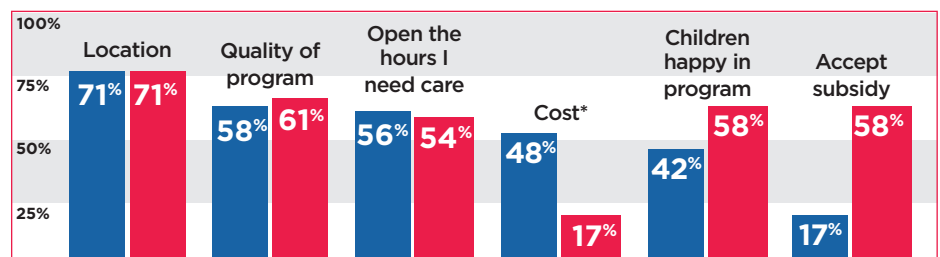
55% of families at all income levels have had trouble paying for child care in the last 6 months.



CHILD CARE ARRANGEMENTS AND SELECTION

Parents often use multiple options, and continue to cite location as their top selection factor.

Top Factors for Child Care Selection

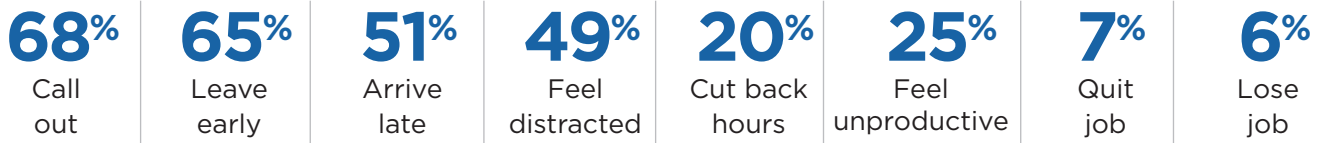


All Parents Subsidy Recipients

* The cost of care to subsidy recipients is the same regardless of the type of care they select.

IMPACT ON EMPLOYMENT

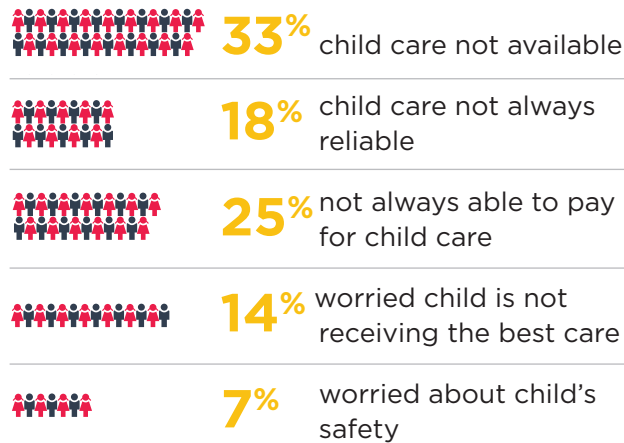
52% of all respondents say child care issues impact their work.



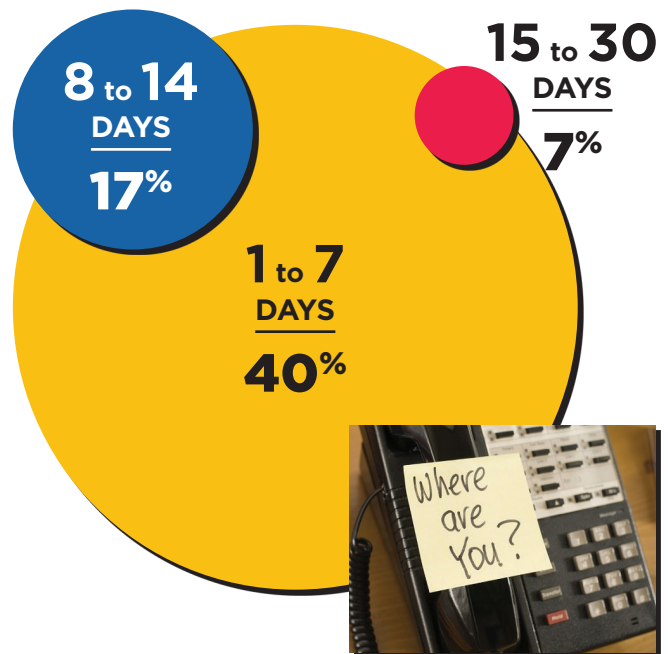
Parents have taken following actions because of child care:



Specific issues that impact parents' work:



How many days of work did you miss in the past 12 months due to child care issues?



Is/was child care an important part of your decision to work where you do?



For 50 years, the Child Care Council of Westchester has worked to ensure children have access to quality early education and after school care, so they can reach their potential and become productive members of the community and our future workforce. Our expert staff provides free, personalized services and referrals to families and employers of working parents; training and quality improvement for child care providers; and critical legislative advocacy to protect and increase state and county child care funding.



CELEBRATING 50 YEARS

Child Care Council of Westchester, Inc.

(914) 761-3456
childcarewestchester.org
 313 Central Park Avenue
 Scarsdale, NY 10583

